

CONSTRUCTION Tufting 1/10" loop pile
STRUCTURE Tufté 1/10" bouclé
STRUKTUR Getuftet 1/10" Schlinge
STRUCTUUR Getuft 1/10" lussenpool

PILE MATERIAL 100% PA solution dyed
COMPOSITION DU VELOURS
POLMATERIAL
POOLMATERIAAL

PRIMARY BACKING non woven PES
SUPPORT non woven PES
TRÄGERMATERIAL Vlies, PES
TUFTDOEK non woven PES

SECONDARY BACKING Action Back
DOSSIER
RÜCKEN
TAPIJTRUG

PILE WEIGHT Ca. 540 gr/m²
POIDS DU VELOURS
POLEINSATZGEWICHT
POOLGEWICHT

TOTAL WEIGHT Ca. 1.800 gr/m²
POIDS TOTAL
GESAMTGEWICHT
TOTAAL GEWICHT

PILE HEIGHT Ca. 3,0 mm
EPAISSEUR DU VELOURS
POLHÖHE
POOLHOOGTE

TOTAL HEIGHT Ca. 5,4 mm
EPAISSEUR TOTAL
GESAMTHÖHE
TOTALE DIKTE

TUFT DENSITY Ca. 180 000/m²
NOMBRES DE POINTS
NOPPENZAHL
AANTAL PUNTEN

PILE DENSITY Ca. 0.111 g/cm³
DENSITÉ DU VELOURS
POLROHDICHTE
POOLDICHTHEID

CLASSIFICATION EN 1307
CLASSEMENT 33 - LC1
KLASSIFIKATION
CLASSIFICATIE

CASTOR CHAIR SUITABILITY EN 985
CHAISE À ROULETTES A: intensive use
STUHLROLLENEIGNUNG
ROLSTOELGESCHIKTHEID

STAIR SUITABILITY EN 1963
ESCALIERS A: intensive use
TREPPENEIGNUNG
TRAPPENGESCHIKTHEID

PERMANENTLY ANTISTATIC ISO 6356
ANTISTATIC PERMANENT < 2 kV
PERMANENT ANTISTATISCH
PERMANENT ANTISTATISCH

IMPACT NOISE RATING ISO 140-8
ISOLATION PHONIQUE tbc dB ΔLw
TRITTSCHALLVERBESSERUNG
GELUIDSISOLATIE

SOUND ABSORPTION ISO 354
ABSORPTION PHONIQUE tbc αw
SCHALLABSORPTIONSGRAD
GELUIDSABSORPTIE

THERMAL RESISTANCE ISO 8302
RÉSISTANCE THERMIQUE tbc m² K/W
WÄRMEDURCHLASSWIDERSTAND
WARMTEDOORLAATWEERSTAND

FASTNESS TO LIGHT ISO 105-B02
SOLIDITÉ A LA LUMIÈRE ≥ 7
LICHTECHTHEIT
LICHTECHTHEID

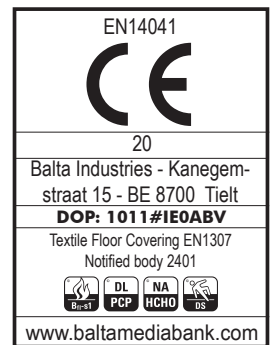
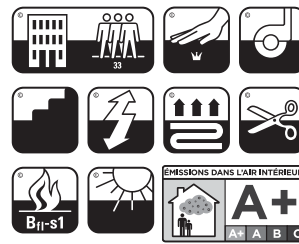
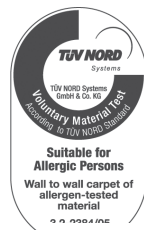
COLOUR FASTNESS TO WATER EN ISO 105-E01
SOLIDITÉ À L'EAU ≥ 4-5
WASSERECHEIT
WATERECHTHEID

FIRE RESISTANCE EN 13501-1
COMPORTEMENT AU FEU Bfl-s1(if glued)
BRENNVERHALTEN
BRANDGEDRAG

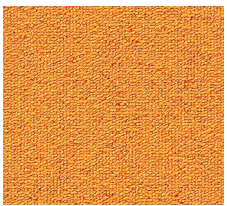
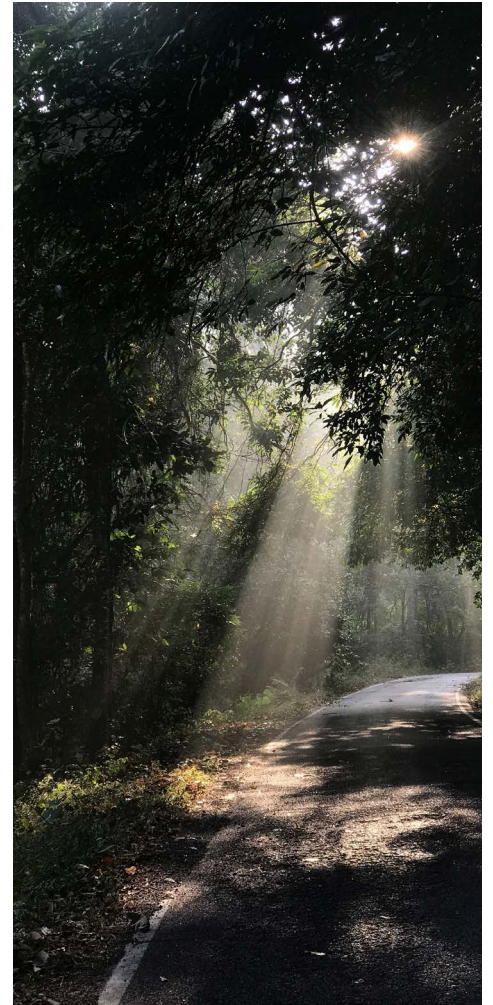
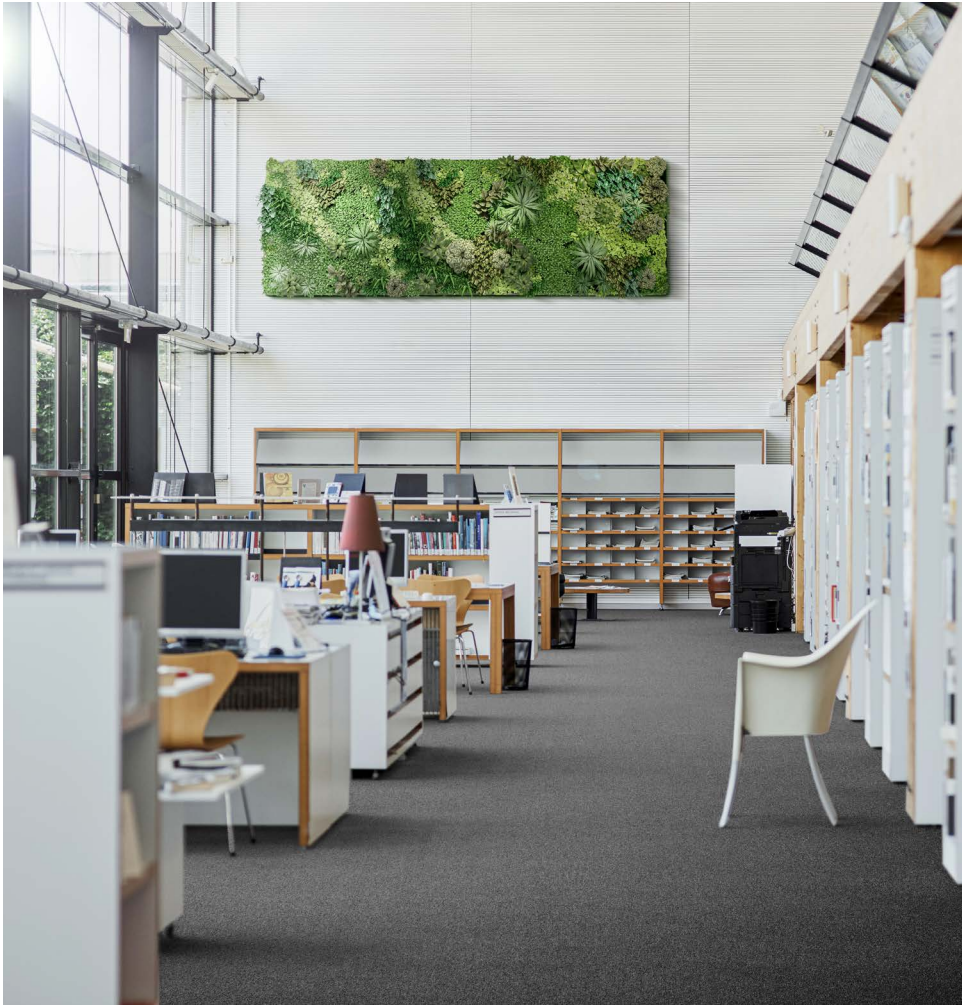
RUBBING FASTNESS EN ISO 105-X12
SOLIDITÉ AU FROTTEMENT ≥ 4
REIBECHTHEIT
WRIJFECHTHEID

NUMBER OF COLOURS 18
NOMBRES DE COULEURS
ANZAHL FARBEN
AANTAL KLEUREN

WIDTH EN ISO 3018
LARGEUR ca. 400 cm
BREITE
BREEDTE



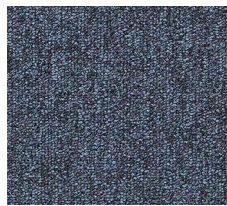
e - blitz AB



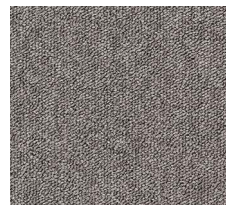
▲ 55



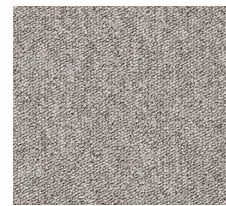
▲ 21



▲ 76



▲ 46



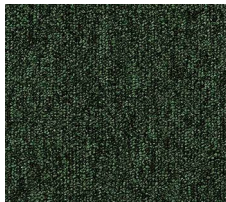
▲ 32



▲ 34



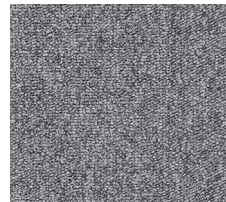
▲ 10



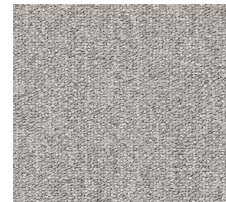
▲ 28



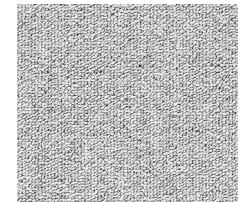
▲ 78



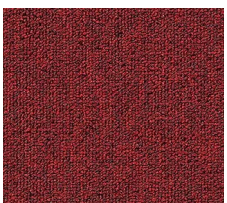
▲ 95



▲ 193



▲ 90



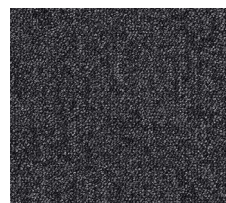
▲ 12



▲ 45



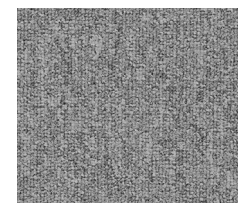
▲ 87



▲ 99



▲ 96



▲ 195